

Other services offered by
the Jasper County SWCD:

Soil Survey Information

Backyard Conservation

Soil Maps

Marking Flags (\$10.70/100)

Conservation Awards Programs

Pond Information

Environmental Education Work-
shops for Teachers

Annual Tree Sale

Things to Consider When Pur-
chasing Property

Technical Assistance for Natural
Resource Planning Lending Li-
brary

Conservation Planning Informa-
tion about State and Federal Natu-
ral Resource Programs

Urban Erosion Control

Volunteer Opportunities

Well Testing Cost Share

Well Plugging Program

Mission

*The Jasper County Soil and Water Conservation
District's mission is to provide leadership and
assistance in the proper use and management of
soil, water, and related natural resources in*

Jasper County.

Sponsored by:



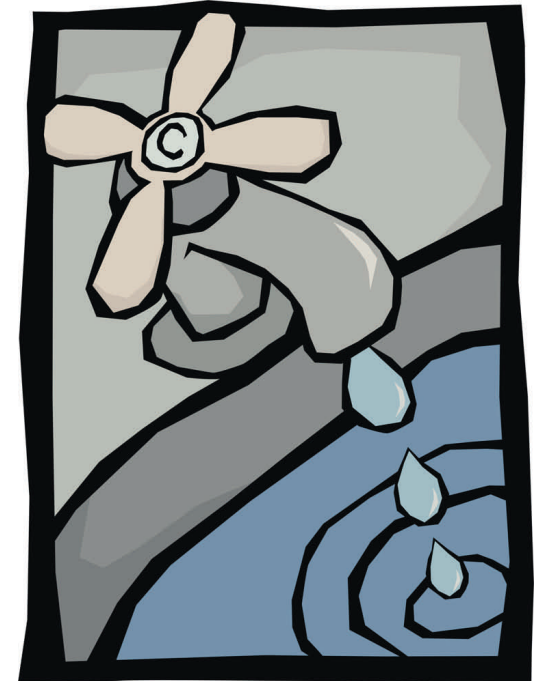
JASPER COUNTY
Soil and Water
Conservation District



MONSANTO FUND



FREE
WELL WATER
AND SURFACE WATER
TESTING



JASPER COUNTY
Soil and Water
Conservation District

211 East Drexel Pkwy
Rensselaer, IN 47978
219-866-8008 Ext. 3
www.jaspercountyswcd.org

Ever wonder about the stream or ditch on your property?

1. Water quality can be impacted in many ways. Testing can begin to find out what the impact sources may or may-not be.
2. Jasper County SWCD is offering water quality testing to residents and businesses who desire such a service.

Why should you test your well water?

1. Private water users are responsible for monitoring their water quality. Experts recommend water testing to ensure safe drinking water.
2. Once is not enough; test your well water on an as-needed basis.
3. Cost-share with possible free water testing services is available.
4. Get the facts on your drinking water.
5. Join an optional ongoing study of water quality in Jasper County.

How to participate in the water testing program?

**Call the SWCD office at 219-866-8008
ext. 3**

Email us: jody.wilson2@in.nacdnet.net

Check our website: www.jaspercountyswcd.org

What is the Jasper County Water Quality Awareness Project?

In 2008, both major watersheds in Jasper County, the Iroquois and Kankakee, were identified as being impaired by non-point source pollution by the Indiana Department of Environmental Management. Trends have shown that Jasper County will continue to grow and develop at an exponential rate; therefore, it is in everyone's best interest to protect drinking water and surface water quality. It is imperative that we all continue establishing baseline water quality data and assisting each other in gaining awareness and knowledge about the impacts of land use on our precious water resources.

Please join us in this effort by getting your well or surface water tested!

What happens with the water data?

1. All results are confidential. For conservation and educational efforts, however, they may be depicted in the map shown below.
2. Data is used to inform land use decisions and prioritize conservation practices.

